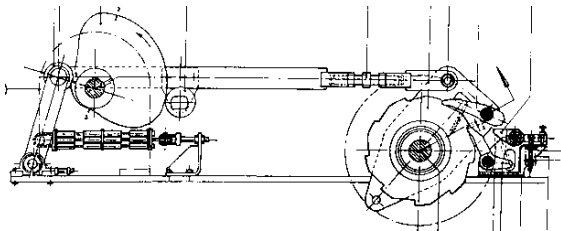
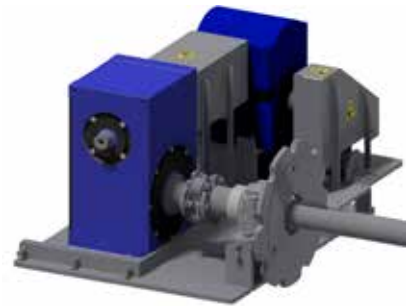


Upgrade Kit | Hydromatic

Indexing mechanism infeed and discharge



"Old" Ratchet mechanism



New indexing mechanism

Looking for an opportunity to increase reliability, reduce maintenance costs and increase yield?

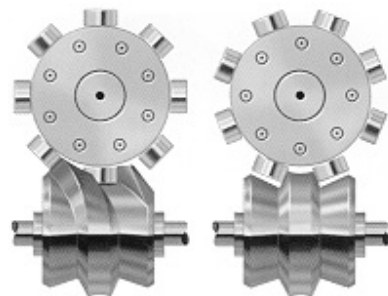
JBT has the solution

PRINCIPLE

Designed to replace the existing ratchet mechanism on the infeed and discharge frame, this innovative solution offers enhanced accuracy, durability, and ease of maintenance. By utilizing this new mechanism, the infeed of cans into the carriers is more precise and consistent, making it an ideal choice for those seeking to increase capacity and shorten processing times. Additionally, the new indexing unit is easy to maintain, with parts that are simple to replace, helping to minimize downtime and reduce maintenance costs.

TARGET MARKET

All JBT Hydromatic Hydrostatic Sterilizers including new and existing installations.



Index section

Dwell section

BENEFITS

Reliable and cost-effective alternative to traditional ratchet mechanisms, with reduced maintenance costs and maintenance schedule.

Capacity increase of up to 23%, enabling customers to optimize production output as needed.

Streamlined can handling process, shortening process times and ensuring a smooth, efficient workflow.

Precise positioning for consistent and reliable can infeed, minimizing risk of production disruptions.

Shorter shifting times towards next infeed positions, enabling operators to prepare cans more efficiently for the next stage of processing.

Let JBT help you reach your goals



REDUCED
MAINTENANCE
COSTS



FULLY
COMPATIBLE
WITH ALL
JBT HYDROS



SHORTEN
PROCESS
TIMES

How does it work?

The Indexing unit is a precise and durable mechanical component that transforms a constant motion of the ingoing shaft into a sinusoidal motion on the outgoing shaft.

Enclosed in an oil-filled housing, it is connected to the indexing shaft by a coupling, providing protection against overloading and misalignments.

The indexing shaft is replaced by bearing and chain wheels and equipped with a safety coupling to prevent imbalance.

The indexing unit is linked to the existing CAVEX gearbox and vertical shaft, reducing the need for other drive components. The assembly is mounted on a base plate and welded to the existing frame.



OUR BRANDS



Contact us

SF&DS
Deccaweg 32
1042 AD Amsterdam
The Netherlands
Phone: +31 20 6348911
Fax: +31 20 6369754
info.ams@jbt.com

John Bean Technologies NV
Breedstraat 3
9100 Sint-Niklaas
Belgium
Phone: +32 3 780 1211
Fax: +32 3 777 7955
sales.sn@jbt.com



We're with you, right down the line.™

Subject to change without notice. 11•23 Kit_A70002-EN



70 West Madison Street | Chicago, IL 60602 hello@jbt.com