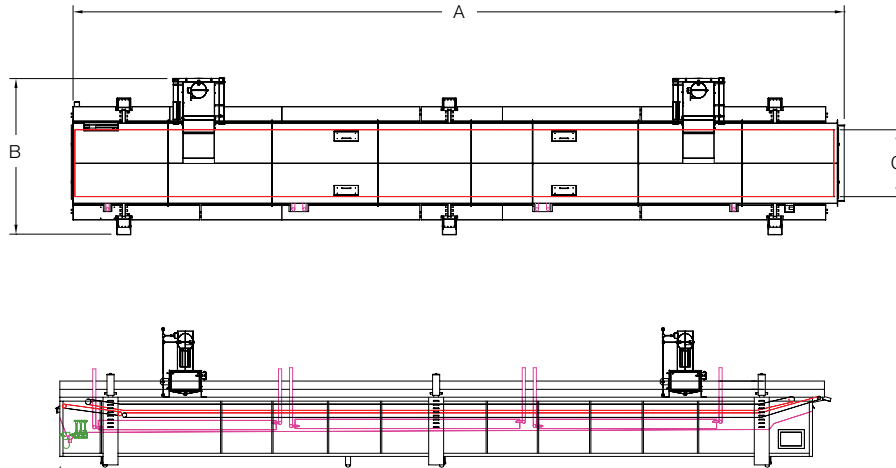


# Stein TFF-IV THERMoFIN<sup>®</sup> Fryer

Specifications



# TFF-IV THERMoFIN® Fryer



Model		2415	2423	4023	4028	4036
A Length	in.	224.5	306.5	314.5	374.5	486.5
B Width	in.	71.5	71.5	88	88	88
C Belt width	in.	26	26	42	42	42
Usable belt width	in.	24	24	40	40	40
Cooking area	sq. ft.	30	46	77	93	124
Minimum Oil Capacity	gal	284	408	630	750	1035
(1" above belt)	lbs.	1846	2652	4095	4875	6728
Maximum Oil Capacity	gal	343	498	770	913	1260
	lbs.	2230	3237	5005	5935	8190
Thermal Fluid Flow	GPM	110	123	296	354	473
Total of Both Zones at 100%						
Electrical Specifications						
Typical requirements (does not include filters)	460/3/60 380-415/3/60 575/3/60	5 Amps	12 Amps	20 Amps	20 Amps	20 Amps
Full load amps	(Typical)	4 KVA	10 KVA	16 KVA	16 KVA	16 KVA
Heat Available	BTU/Hr x 1000	866	1254	2450	2781	3836
Steam, Vent, Fan @ 1" SP	CFM	500	1000	1000	1000	1000
Cooking Oil Supply Tank	gal.	850	1200	1540	1540	2500
Supply Tank Dimensions	dia x ht.	66 x 76	72 x 88	76 x 99	76 x 99	n/a
TF heater size (one fryer)	BTU/Hr x 1000	1500	1500	2500	3300	5000
TF heater size(two fryers)	BTU/Hr x 1000	2500	3300	6600	6600	8600
Crating Dimensions	length (in.)	190	330	324	384	500
	width (in.)	90	89	96	96	96
	height (in.)	82	88	82	82	82
Gross Shipping Weight	lbs.	5000	12000	10000	11000	16000
Utility drawing	Electric	U087-11-0124	U087-04-0026	U087-06-0146	U087-01-4088	U087-13-0060
	Hydraulic	U087-11-0108		U087-06-0093	U087-01-0054	U087-13-0121



Model		2415	2423	4023	4028	4036
A Length	mm	5702	7785	7988	9512	12357
B Width	mm	1816	1816	2235	2235	2235
C Belt width	mm	660	660	1067	1067	1067
Usable belt width	mm	610	610	1016	1016	1016
Cooking area	sq. m	2.79	4.27	7.15	8.64	11.52
Minimum Oil Capacity	liters	1075	1545	2385	2839	3918
(1" above belt)	kg	837	1203	1857	2211	3052
Maximum Oil Capacity	liters	1298	1885	2915	3456	4770
	kg	1012	1468	2270	2692	3715
Thermal Fluid Flow	liters/sec	6.9	7.8	18.7	22.3	29.8
Total of Both Zones at 100%						
Electrical Specifications						
Typical requirements (does not include filters)	460/3/60 380-415/3/60 575/3/60	5 Amps	12 Amps	20 Amps	20 Amps	20 Amps
Full load amps	(Typical)	4 KVA	10 KVA	16 KVA	16 KVA	16 KVA
Heat Available	kCal/Hr x1000	217	316	613	695	959
Steam, Vent, Fan @ 1" SP	m <sup>3</sup> /sec	.23	.46	.46	.46	.46
Cooking Oil Supply Tank	liters	3218	4542	5830	5830	9464
Supply Tank Dimensions	dia x ht.	1676 x 1930	1829 x 2235	1930 x 2515	1930 x 2515	n/a
TF heater size (one fryer)	kw	440	440	733	967	1465
TF heater size (two fryers)	kw	733	967	1934	2520	2520
Crating Dimensions	length (mm)	4826	8382	8230	9754	12700
	width (mm)	2286	2261	2468	2438	2438
	height (mm)	2083	2235	2083	2083	2083
Gross Shipping Weight	kg	2268	5443	4536	4990	7258
Utility drawing	Electric	U087-11-0124	U087-04-0026	U087-06-0146	U087-01-4088	U087-13-0060
	Hydraulic	U087-11-0108		U087-06-0093	U087-01-0054	U087-13-0121



## We are your single source for profitable processing solutions

JBT FoodTech can provide you with portioners, freezers, and everything in between – including process control, food product development assistance, operator training and a full range of customer support alternatives.

Our Food Technology Centers have served leading processors in the development of many of the world's most popular food brands. Learn how to increase your processing potential by contacting your JBT FoodTech representative or by visiting our website.

We're with you right down the line.™

[www.jbtfoodtech.com](http://www.jbtfoodtech.com)



[www.jbtfoodtech.com](http://www.jbtfoodtech.com)

#### North America

JBT FoodTech  
1622 First Street  
Sandusky, OH 44870  
USA  
Phone +1 419 626 0304  
Fax +1 419 626 9560  
[frigostein.info@jbt.com](mailto:frigostein.info@jbt.com)

#### Europe

JBT FoodTech  
Rusthallsгатan 21, Box 913  
SE-251 09 Helsingborg  
SWEDEN  
Phone +46 42 490 4000  
Fax +46 42 490 4040  
[corporate@jbt.com](mailto:corporate@jbt.com)

#### Asia

John Bean Technologies  
Singapore Pte Ltd  
20 Harbour Drive  
#04-02 PSA Vista  
Singapore 117612  
Tel: +65 67766220  
Fax: +65 67766229  
[infoasia-jbtfoodtech@jbt.com](mailto:infoasia-jbtfoodtech@jbt.com)

#### Latin America

John Bean Technologies  
Máq. Equip. Ind. Ltda.  
Av Eng Luis Carlos Berrini, 1461  
9th Floor – Brooklin  
04571-903 Sao Paulo BRAZIL  
Phone + 55 11 3055 1010  
Fax +55 11 3055 1030  
[latinamerica.info@jbt.com](mailto:latinamerica.info@jbt.com)