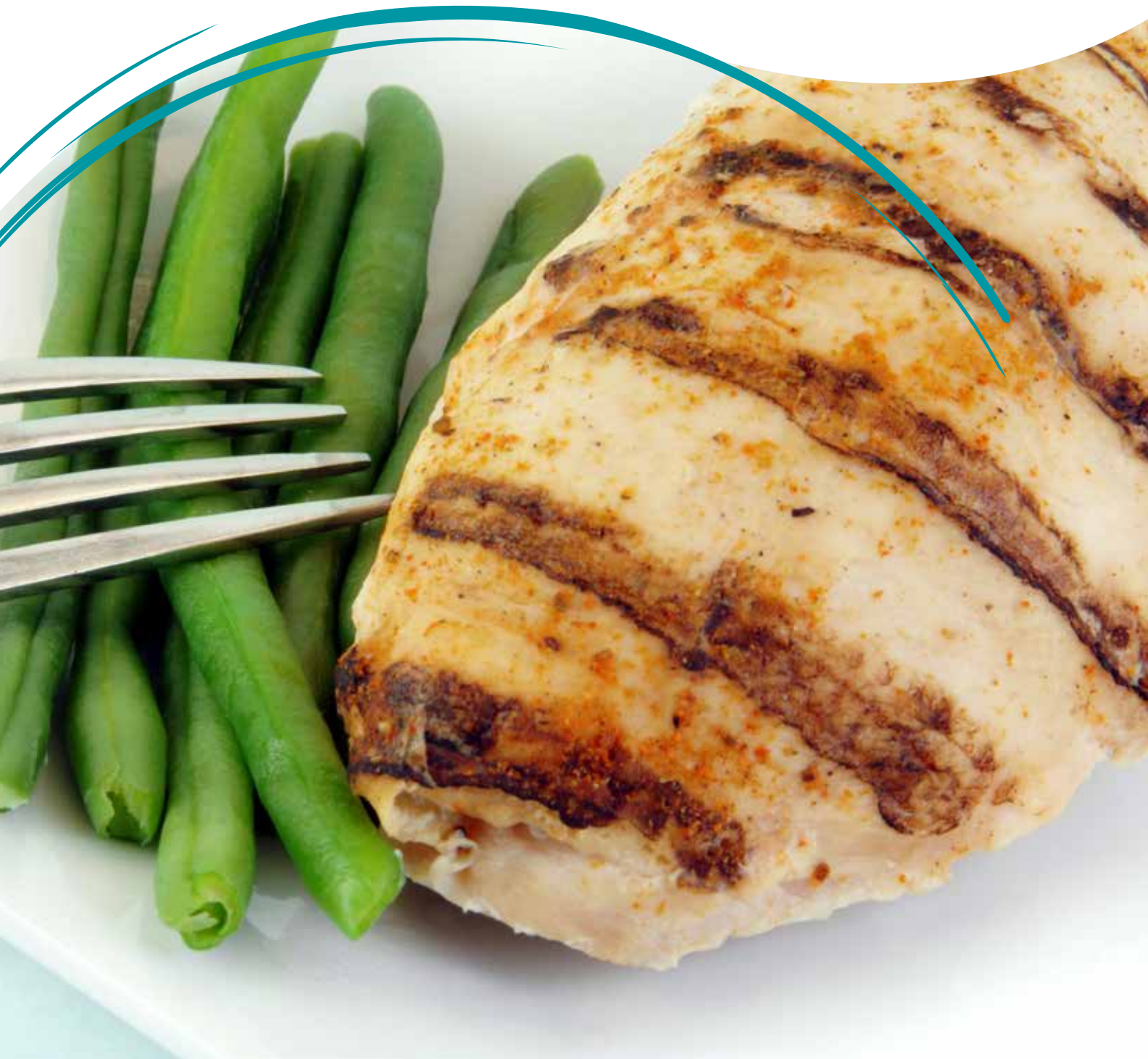


Stein CMII Charmarker

CMII-S40 CMII-D40



CMII Charmarker

Standard Features

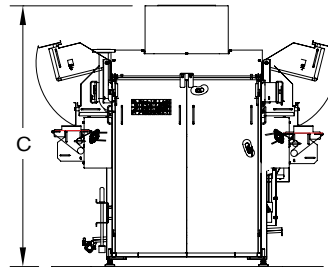
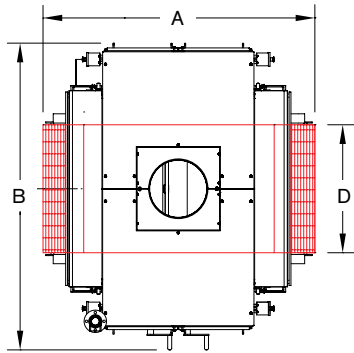
- CharMarker rings 3/16" (5 mm) wide with 1/2" (13 mm) spacing (radius on ring)
- Auto ignition
- Ribbon burner
- Manual controls with IEC style components
- Product infeed height: 42" – 44" (1067 mm – 1118 mm)
- Product discharge height: 42" – 44" (1067 mm – 1118 mm)
- Product marking speed: 6 FPM (0.33 m/s) – 40 FPM (2.2 m/s)
- Empty belt speed (for use as conveyor): 6 FPM (0.33 m/s) – 65 FPM (3.5 m/s)
- Main power connection to machine: Conduit connector
- Flame rod wiring: Independent in separate conduit
- Independent drives for conveyors and rings

- Quick release igniter/detector for wash down
- Quick changeover to top only marking
- Standard Product conveyor: Mesh
- 4.5" (114 mm) product clearance
- Stainless steel open frame construction
- Stainless steel bearings
- High temperature, corrosion resistant marking ring alloy
- Built to NSF and AMI equipment guidelines for Hygiene and Sanitation

Optional

- Charmarking rings - 1/8" (3 mm) wide with 1/2" (13 mm) spacing (radius on ring)
- Infeed conveyor extension- 12" (300 mm) chain driven 2 FPM (0.13 m/s) slower than main belt
- Discharge conveyor extension- 12" (300 mm) chain driven 2 FPM (0.13 m/s) faster than discharge belt
- LINK® Compatible

CM II-S40				
Machine Dimensions	USA		Metric	
A - belt length	60.2 in.		1529 mm	
B - width (with doors open)	132.16 in.		3357 mm	
C - height	81.5 in.		2070 mm	
D - belt width	40 in.		1016 mm	
Utility Requirements				
Exhaust Vent Duct Size	18 in. (457 mm)			
Exhaust Fan	3,000 CFM (5,100 m ³ /hr.) @ 1" W.C. (2.5 mbar)			
Combustion Air Connection	3" NPTF			
Combustion Blower	215 CFM (360 m ³ /hr.) @ 28" W.C. (70 mbar)			
Gas Line Connection	1.25" NPTF			
Gas Requirement (maximum)	12 CFM (20 m ³ /hr.) @ 9" W.C. (22.5 mbar)			
Maximum Thermal Output	600,000 BTU (151,200 kcal)			
Water Connection	3/4" NPT			
Water Requirement (maximum)	2 GPM (7.5 l/min.) @ 40 psi (2.8 bar)			
Electrical Service	380-415 v @ 50 Hz	380 v @ 60 Hz	460 v @ 60 Hz	575 v @ 60 Hz
Full load current (typical)	21 kW	21 kW	25.0 A	21 kW
Gross Shipping Weight				
Main Module	4100 lbs. (1863 kg)			
Gas Train Module	2000 lbs. (909 kg)			
Utility drawing	U072-04-2000			



CM II-D40 CharMarker				
Machine Dimensions		USA		Metric
A - belt length		60.2 in.		1529 mm
B - width (with doors open)		132.16 in.		3357 mm
C - height		81.5 in.		2070 mm
D - belt width		40 in.		1016 mm
Utility Requirements				
Exhaust Vent Duct Size		F18 in. (457 mm)		
Exhaust Fan		6,200 CFM (10,500 m ³ /hr.) @ 1" W.C. (2.5 mbar)		
Combustion Air Connection		3" NPTF		
Combustion Blower		475 CFM (807 m ³ /hr.) @ 28" W.C. (70 mbar)		
Gas Line Connection		1.25" NPTF		
Gas Requirement (maximum)		20 CFM (34 m ³ /hr.) @ 9" W.C. (22.5 mbar)		
Maximum Thermal Output		1,200,000 BTU (302,400 kcal)		
Water Connection		¾" NPT		
Water Requirement (maximum)		5 GPM (19 l/min.) @ 40 psi (2.8 bar)		
Electrical Service	380-415@50 Hz	380@60 Hz	460@60 Hz	575@60 Hz
Full Load Current (standard configuration)	29 kW	29 kW	35 A	29 kW
Gross Shipping Weight				
Main Module	4500 lbs. (2045 kg)			
Gas Train Module	2000 lbs. (909 kg)			
Utility drawing	U072-05-0001			



We are your single source for profitable processing solutions

JBT FoodTech can provide you with portioners, freezers and everything in between – including process control, food product development assistance, operator training and a full range of customer support alternatives.

Our Food Technology Centers have served leading processors in the development of many of the world's most popular food brands. Learn how to increase your processing potential by contacting your JBT FoodTech Account Manager or by visiting our website.

We're with you right down the line.™

www.jbtfoodtech.com



www.jbtfoodtech.com

North America

JBT FoodTech
1622 First Street
Sandusky, OH 44870
USA
Phone +1 419 626 0304
Fax +1 419 626 9560
process-solutions@jbt.com

Europe

JBT FoodTech
Rusthallsgratan 21, Box 913
SE-251 09 Helsingborg
SWEDEN
Phone +46 42 490 4000
Fax +46 42 490 4040
corporate@jbt.com

Asia

John Bean Technologies
Singapore Pte Ltd
20 Harbour Drive
#04-02 PSA Vista
Singapore 117612
Tel : +65 67766220
Fax: +65 67766229
infoasia-jbtfoodtech@jbt.com

Latin America

John Bean Technologies
Máq. Equip. Ind. Ltda.
Av Eng Luis Carlos Berrini, 1461
9th Floor – Brooklin
04571-903 Sao Paulo BRAZIL
Phone + 55 11 3055 1010
Fax +55 11 3055 1030
latinamerica.info@jbt.com