



**STRONGER
TOGETHER**

**PRIME
EQUIPMENT GROUP**
Simple Solutions for Poultry Processing

INLINE LABEL/PACKAGING QUALITY CHECK MACHINES

Model: SL LPQC



**In the Pre-Seal area:
Automatic scan
and reject for:**

- Meat in package edges
- Loose meat in packaging
- Packaging deformations
- Foreign matter
- Product breakage
- Product position
- Dividing paper positions
- Product color-checking
- Product deform/smash
- Deformed product perimeter

**In the Post-Seal area:
Automatic scan
and reject for:**

- Package seal check
- Check correct labeling
- Check for label defects
- Check label alterations
- Proper Bar Code read
- OCR of codes
- OCR of printed fields

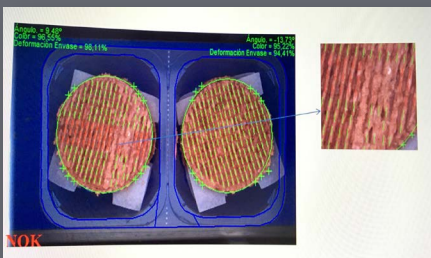
The DCM By Prime Inline Label & Packaging Quality Machines use the same machine platform to handle two different jobs related to final product packaging. Used before the sealer, software scans/rejects to ensure that the packed product meets standards to be sealed in terms of size, shape and deformities. Used with different software after the weigher, sealer and label-maker, it scans for any breach of the sealing area, and verifies that the label is legible and correct in all details.

See Prime in action: View
www.PrimeEquipmentGroup.com/videos

Viewing online?
Click here

CHECKS/REJECTS PACKED PRODUCT BEFORE THE SEALER TO SIMPLIFY RE-WORK

CHECKS/REJECTS LABEL AND SEAL QUALITY AFTER THE WEIGHER AND LABELER TO CATCH ILLEGIBLE LABELS AND OBJECTS OUTSIDE THE SEALING AREA THAT BREACH THE SEAL



PRIME ROI:

REDUCES RE-WORK BY CATCHING PACKAGES THAT NEED ATTENTION BEFORE THE SEALING MACHINE

REDUCES CUSTOMER COMPLAINTS FROM BAD LABELING AND BREACHED PACKAGING BY CATCHING THEM BEFORE PACK-OUT

2001 Courtright Road
Columbus, OH 43232 USA

Please call
+1 (614) 253-8590

Send us an email
Sales@PrimeEquipmentGroup.com

More info
PrimeEquipmentGroup.com

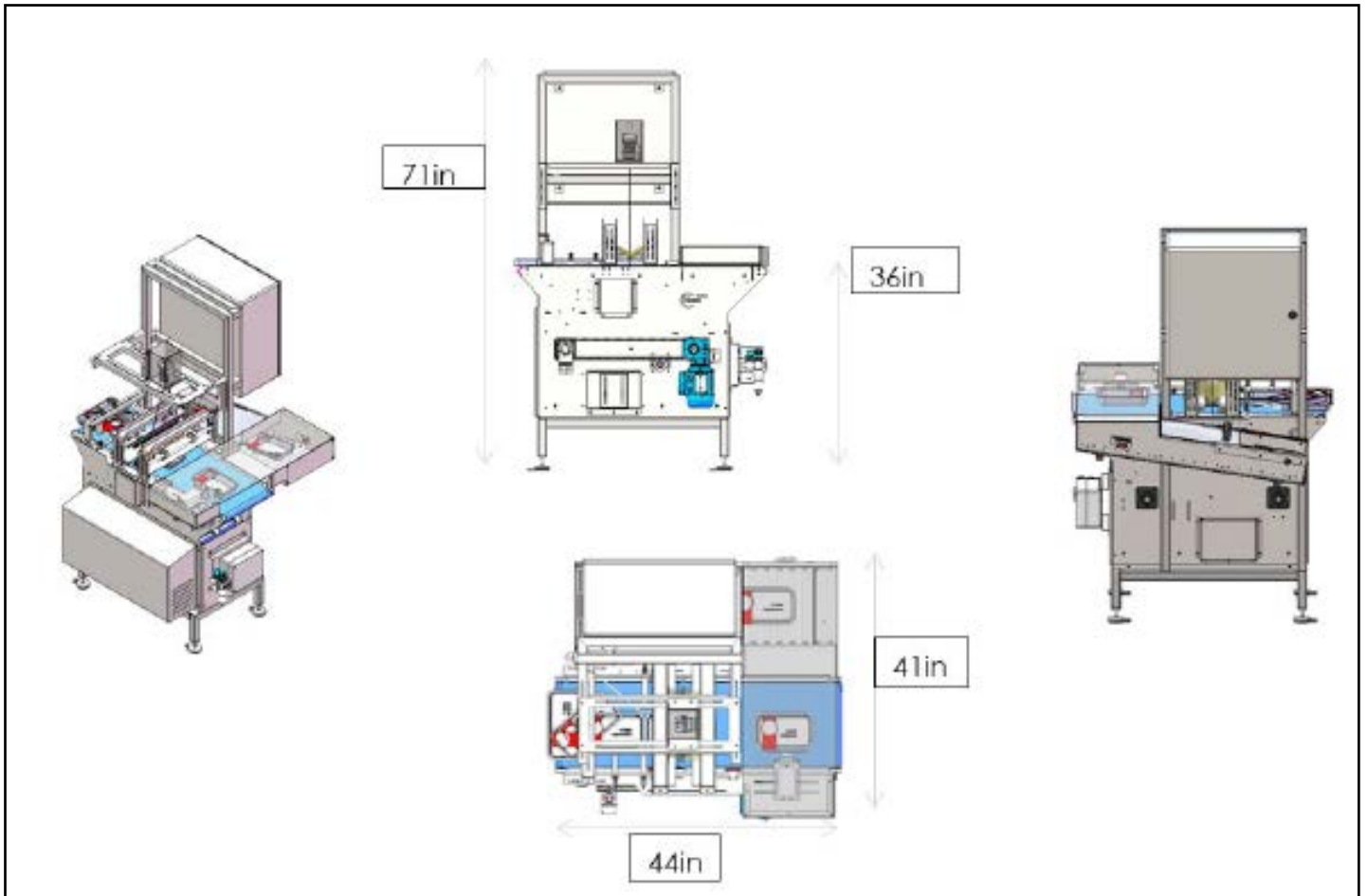


**STRONGER
TOGETHER**

PRIME
EQUIPMENT GROUP
Simple Solutions for Poultry Processing

INLINE LABEL/PACKAGING QUALITY CHECK MACHINES

Model: SL LPQC



TECHNICAL SPECIFICATIONS

Electrical Requirements:	120 V A.C. 50/60 Hz, or custom
Weight:	610 lbs.
Production Rate:	60 to 100/min, depending on scan parameters
NOTE: Specifications are accurate at time of publication	

2001 Courtright Road
Columbus, OH 43232 USA

Please call
+1 (614) 253-8590

Send us an email
Sales@PrimeEquipmentGroup.com

More info
PrimeEquipmentGroup.com