



**AUTOMATED  
SYSTEMS**

# JBT AUTOMATED SYSTEMS A SMART MOVE

In today's highly competitive environment, companies across all industries face intense pressure to improve efficiency, reduce costs, and overcome labor shortages. JBT's Automated Systems offer a scalable solution for mobile automation by optimizing resource utilization, minimizing human error, and streamlining operations.

Whether in manufacturing, logistics, healthcare, or distribution, these intelligent systems enhance productivity by automating repetitive material movements while improving safety and enabling real-time data insights for better decision-making. By integrating mobile automation, businesses can stay competitive, adapt to changing demands, and drive long-term growth in an increasingly automated world.

## Markets We Serve

- **Hospital**
- **Food & Beverage**
- **Automotive**
- **Building Materials**
- **Fast Moving Consumer Goods (FMCG)**
- **Pharma and Life Sciences**
- **Warehouses/DCs**
- **Manufacturing**

## WHY MOBILE AUTOMATION IS A SMART MOVE:

↓ **labor rate**  
**= \$4 per hour**

**Reduce labor expenses—**  
equivalent labor rate  
as low as \$4 per hour

↑ **productivity**  
**10%-20%**

**Increase productivity by**  
**10%-20%** by getting the right  
materials to the right place at  
the right time

↑ **efficiency**  
**20%-50%**

**Increase operational efficiency**  
**by 20%-50%** by automating  
repetitive tasks, reducing  
downtime, and optimizing  
routing and scheduling

# WHY PARTNERING WITH JBT IS A SMART MOVE:

## Proven Technology From Industry Pioneers

- Unparalleled industry expertise developed from over four decades of designing and deploying high-quality, precision-engineered mobile automated systems
- 7,000+ vehicles operating globally, 700+ systems with millions of hours of stable operation
- 40+ years of application knowledge

## Solutions Tailored to Your Business

- A diverse range of automation solutions—including vehicles and fleet management software—that can be tailored to meet your industry's unique needs

## Safety First and Always

- Excellent mobile robot safety record
- Safety starts with design then continues through implementation and support to protect your company's most valuable asset: your people

## Exceptional Service Everywhere

- World-class customer support throughout the entire life cycle ensures your system continues to deliver superior results



	CB750	CB2500	Trailer Loading	CB4500	Reach
Standard lift weight up to	750kg / 1,600lbs	2,500kg / 5,500lbs	2,000kg / 4,400lbs	4,500kg / 10,000lbs	2,041kg / 4,500lbs
Standard lift height up to	1,220mm / 48"	9,140mm / 360"	2,540mm / 100"	5,770mm / 227"	12,500mm / 490"
Standard lift speed up to	25mm/s   1"/sec	300mm/s   12"/sec	220mm/s   8.7"/sec	135mm/s   5.3"/sec	300mm/s   12"/sec
Standard travel speeds up to	1.8mps / 350fpm	1.6mps / 315fpm	1.8mps / 350fpm	2.0mps / 394fpm	2.0mps / 394fpm
	<i>Economy and sustainability</i>	<i>Rugged performance, improved efficiency</i>	<i>Sophisticated design, optimum flexibility</i>	<i>Engineered for heavy lifting</i>	<i>Reach higher. Move faster. Work safer.</i>

# COUNTERBALANCE 750

## AUTOMATED GUIDED VEHICLE (AGV)



### Economy and sustainability in horizontal transport

The CB750 all-electric AGV is the most economical vehicle in our counterbalance fleet and excels at applications where product is moved at or above floor level. The CB750 is not limited to floor operations and can work with conveyors. Maximum lift height up to 48" (1.25m) high.



#### CB750 Features

- All-electric sustainable and efficient design
- 360° obstacle detection
- Flexible for various wood, plastic, or metal pallet types
- Interfaces with racks, conveyors, AS/RS, and other plant equipment
- Compatible with various fork options: tilt, side shift, fork positioning
- Automatic battery charging—contactless charging optional
- Load capacity up to 1,600lbs (750kg) at 24" (60mm) load center



#### CB750 Benefits

- Economical AGV for efficient horizontal transport
- Small footprint for optimal maneuverability
- Ideal for automating existing facilities with narrow aisles
- Reduces facility reconfiguration, maximizes existing space
- All-electric design reduces spare parts and maintenance
- Load detection increases load positioning accuracy



#### Typical Picks/Drops

- Cell-to-cell movement in manufacturing
- Fast Moving Consumer Goods movement
- Floor-to-floor horizontal transport
- Raw material to/from dock to point of use
- Packaging material movement
- Rework or QA processing movement
- Pallet transport—empties returned

Standard lift weight up to:

**750kg / 1,600lbs**

Standard lift height up to:

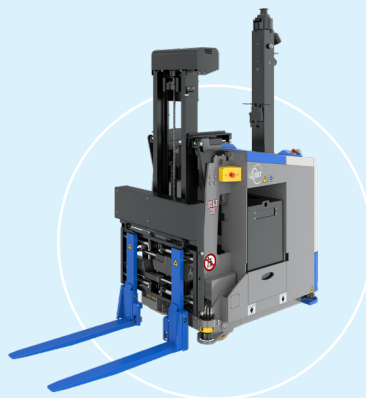
**1,220mm / 48"**

Standard lift speed up to:

**25mm/s | 1"/sec**

Standard travel speeds up to:

**1.8mps / 350fpm**



# COUNTERBALANCE 2500

## AUTOMATED GUIDED VEHICLE (AGV)

### Rugged performance, improved efficiency

Ideal for handling pallets, racks, and rolls, our counterbalance automatic guided vehicles (AGVs) excel in floor-to-floor and floor-to-rack transfers. However, they are not limited to floor operations and can interface with plant equipment: racks, conveyors, and AS/RS. Our counterbalance vehicles also provide excellent versatility.



#### CB2500 Features

- Interfaces with racks, conveyors, AS/RS, and other plant equipment
- Compatible with multiple fork attachments: double forks, single double forks, clamp, fork positioning
- In pushback racking, able to push heavier loads at higher rack locations
- Full lift height to 18ft (6m), reduced load capacity to 26ft (8m)
- Load size and weight are lift-height dependent
- Load capacity 5,500lbs (2,500kg) at 24" (600mm) load center



#### CB2500 Benefits

- Hydraulic lift provides fast movement of heavy loads
- Versatile horizontal and vertical load movement
- Ideal for load stacking and de-stacking
- Counterbalance design assures rack face access for loads
- Clean, sustainable battery power source with automatic charging
- Load detection increases load positioning accuracy



#### Typical Picks/Drops

- Heavier rack movement cell to warehouse
- Over/under rack and rack stacking/de-stacking
- Floor-to-rack vertical transport
- Raw material to/from dock to point of use
- Multiple simultaneous load movement:
  - Single double forks carry 2 or 4 loads
  - Block stacking of loads

Standard lift weight up to:  
**2,500kg / 5,500lbs**

Standard lift height up to:  
**9,140mm / 360"**

Standard lift speed up to:  
**300mm/s | 12"/sec**

Standard travel speeds up to:  
**1.6mps / 315fpm**



# AUTOMATIC TRAILER LOADER/UNLOADER (ATL/U)

AUTOMATED GUIDED VEHICLE (AGV)

## Sophisticated design, optimum flexibility

Specially designed to operate in the dock area, our Automated Trailer Loader/Unloader (ATL/U) provides a safe, efficient, automated solution to trailer loading and unloading, all without modifying a single truck. With JBT's ATL/U AGVs working at your facility, low productivity, incorrect shipments, and unsafe and chaotic docks are a thing of the past.



### ATL Features

- High floor clearance handles dock plate slopes
- Interfaces with other automated and manual equipment
- Soft tires cushion loads over the dock plate
- 360° obstacle detection
- Tilting mast accommodates slope of trailers
- Maximum fork height—100" (2.5m) top of forks
- Load capacity up to 6,000lbs (2,720kg) at 24" (60mm) load center



### ATL Benefits

- Safe, efficient turnkey-ready trailer loader/unloader
- Single double attachment enables four loads at once (2 x 2)
- Accommodates varying dock plate heights and loading angles
- Powerful rear motor/torque hubs power loads in and out of trailers
- Side shifting enables equal load weight distribution within trailer
- Tilting mast handles challenging last trailer load pick or drop



### Typical Picks/Drops

- Floor-to-floor horizontal transport
- Raw material to/from dock to point of use
- Pallet transport—empties returned
- Material transport to and from staging areas

Standard lift weight up to:

**2,000kg / 4,400lbs**

Standard lift height up to:

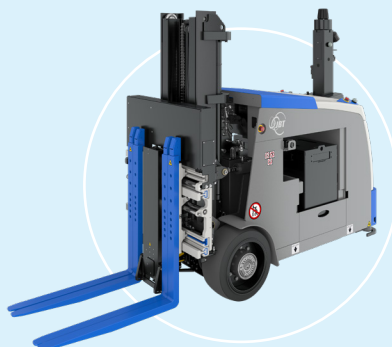
**2,540mm / 100"**

Standard lift speed up to:

**220mm/s | 8.7"/sec**

Standard travel speeds up to:

**1.8mps / 350fpm**





# COUNTERBALANCE 4500

## AUTOMATED GUIDED VEHICLE (AGV)

### Engineered for heavy lifting

Ideal for handling gypsum, plywood, insulation, and roofing materials, the CB4500 excels in end-of-line transfers, warehouse storage, and staging for shipping. Designed for versatility, it seamlessly moves materials between stackers, warehouses, and staging areas, ensuring efficient and reliable transport. The CB4500 is especially suited for the building materials industry.



#### CB4500 Features

- Handles gypsum and other building materials
- High floor clearance handles varying floor conditions
- Interfaces with other automated and manual equipment
- Large tires, cushion loads throughout the facility
- 360° obstacle detection for improved safety
- Optional flat, tapered forks prevent loads from shifting
- Load capacity 10,000lbs (4,500kg) at 24" (600mm) load center



#### Typical Picks/Drops

- End-of-line transfers
- Storage and retrieval in the warehouse
- Pick-up stackers



#### CB4500 Benefits

- Works in harsh environments (dust, particulates)
- Reduces product damage
- Works in environment with dunnage on floor
- Load detection increases load positioning accuracy



Standard lift weight up to:  
**4,500kg / 10,000lbs**

Standard lift height up to:  
**5,770mm / 227"**

Standard lift speed up to:  
**135mm/s | 5.3"/sec**

Standard travel speeds up to:  
**2.0mps / 394fpm**

# REACH

## AUTOMATED GUIDED VEHICLE (AGV)

### Reach higher. Move faster. Work safer.

Optimize space, improve safety, and boost efficiency with the Reach AGV, engineered for seamless integration into both brownfield and greenfield facilities.



#### Reach Features

- 12.5m lift height reaches higher for increased storage capacity
- High driving speeds for reduced cycle times and greater throughput
- Advanced AGV safety features for accident prevention
- Easily fits into existing layouts
- Wireless charging to minimize downtime
- Adaptable for all facilities, including brownfield retrofits



#### Reach Benefits

- Maximize storage density with efficient use of vertical space
- Minimize manual handling to lower operational costs
- Improve order fulfillment speed and inventory tracking



#### Typical Picks/Drops

- High-bay pallet storage
- Automated order picking and replenishment
- Cross-docking and staging
- Inventory management and cycle counting
- Work-in-progress (WIP) transport

Standard lift weight up to:

**2,041kg / 4,500lbs**

Standard lift height up to:

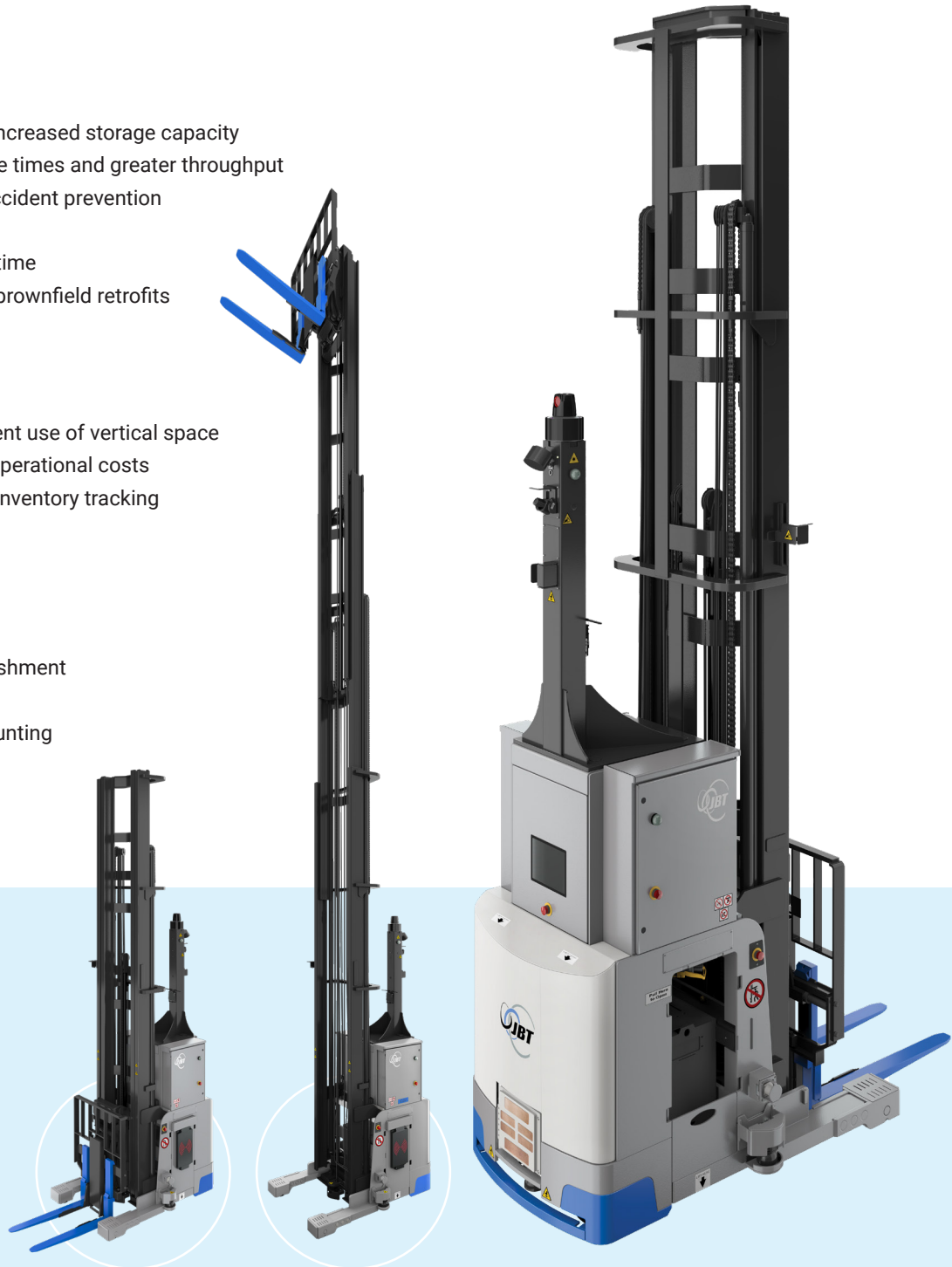
**12,500mm / 490"**

Standard lift speed up to:

**300mm/s | 12"/sec**

Standard travel speeds up to:

**2.0mps / 394fpm**

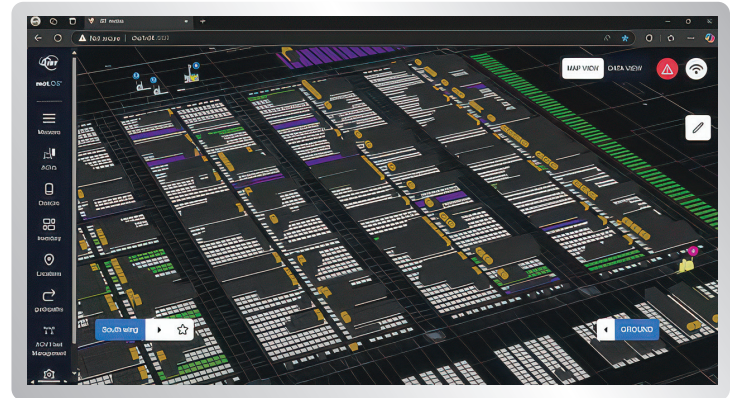




## FLEET MANAGEMENT SOFTWARE

**Multiple fleets.  
Multiple manufacturers.  
One operating system.**

JBT mōt.OS is an innovative software platform that maximizes the total life cycle value of mobile automation systems by delivering seamless integration, transforming logistics and manufacturing operations.



### SIMPLE

- User-friendly automation platform
- Intuitive monitoring and analytics
- Seamless horizontal and vertical integration

### SCALABLE

- Fleet interoperability with performance and safety in scope
- Ability to manage hundreds of vehicles and thousands of storage locations
- Site-to-enterprise mobile robot asset management

### SUSTAINABLE

- Maximized total life cycle value via equipment and software asset management
- Flexible and redeployable technologies
- Decades of experience in complex automation environments

## BENEFITS OF mōt.OS



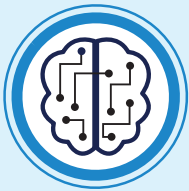
### Interoperability—Enhancing Operational Efficiency

- **Increased Flexibility**—adapt and grow with minimal disruption
- **Centralized Management**—streamline your operations, saving time and resources
- **Scalability**—scale in line with your business needs
- **Comprehensive Integration**—enjoy a cohesive and efficient operational environment
- **Enhanced Vendor Collaboration**—achieve optimal performance and coordination



### Cybersecurity—Protecting Your Business

- **Centralized Authentication**—reduce authentication complexity and enhance security and efficiency
- **Safety Awareness Training**—empower your team and protect your organization
- **SOC2 Type II Certification**—safeguard your data and remain compliant with global security protocols
- **Multi-Factor Authentication (MFA)**—reduce unauthorized access and keep your sensitive information safe
- **Security Protocols Support**—ensure secure communication and provide peace of mind



### AI/Machine Learning—Transforming Your Operations

- **Data-Driven Insights**—optimize logistics and processes and improve performance and cost savings
- **Autonomous Decision-Making**—ensure seamless and efficient operations
- **Predictive Maintenance**—address issues before they impact your operations
- **Path Optimization**—reduce travel time and energy consumption

COPYRIGHT ©2025 – Property of JBT Corporation. This document contains confidential and proprietary information of JBT Corporation. Further, materials contained within this document are protected by US and international copyright law and may not be reproduced, distributed, or transmitted without the prior express written permission of JBT Corporation.