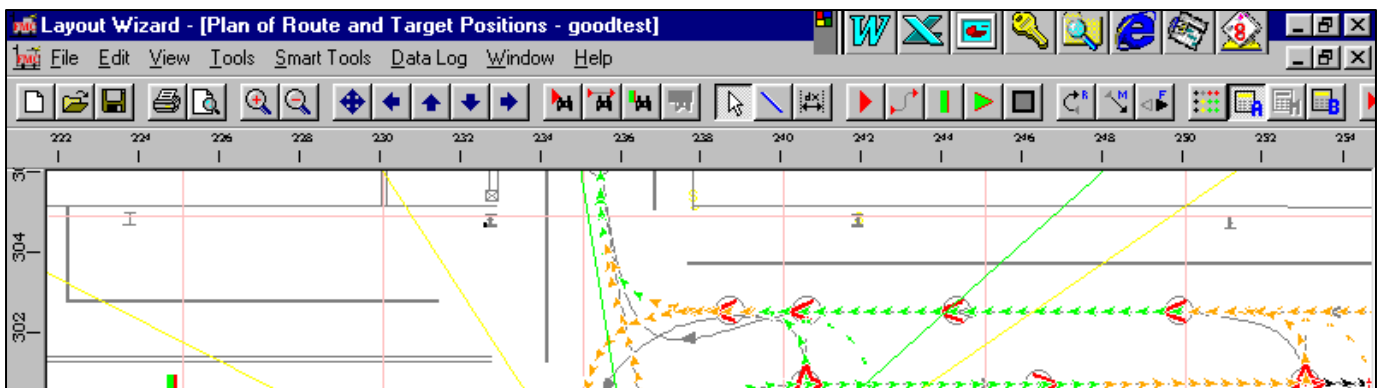
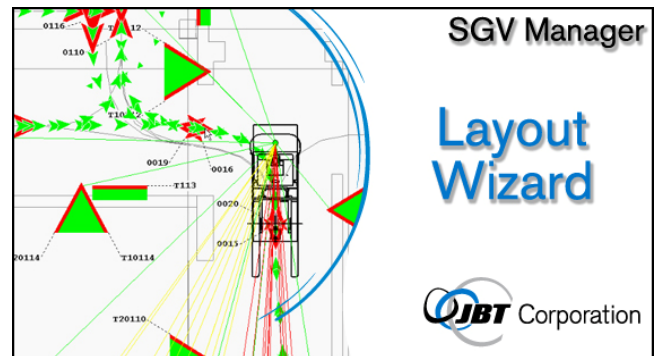


Self Guided Vehicle (SGV) System Design Software

Layout Wizard™ is a Windows-based software tool which allows the user to define and edit the **SGV** road system.

- ◆ Quick and easy changes to the guideway
- ◆ User friendly, menu-driven interface
- ◆ Quick to learn with easy to use toolbars
- ◆ Used for all SGV types
- ◆ Smoothly integrates with other SGV Manager tools
- ◆ Used in dozens of installations worldwide
- ◆ Onsite Training and Documentation available



Familiar Windows drop down menus in a graphical interface

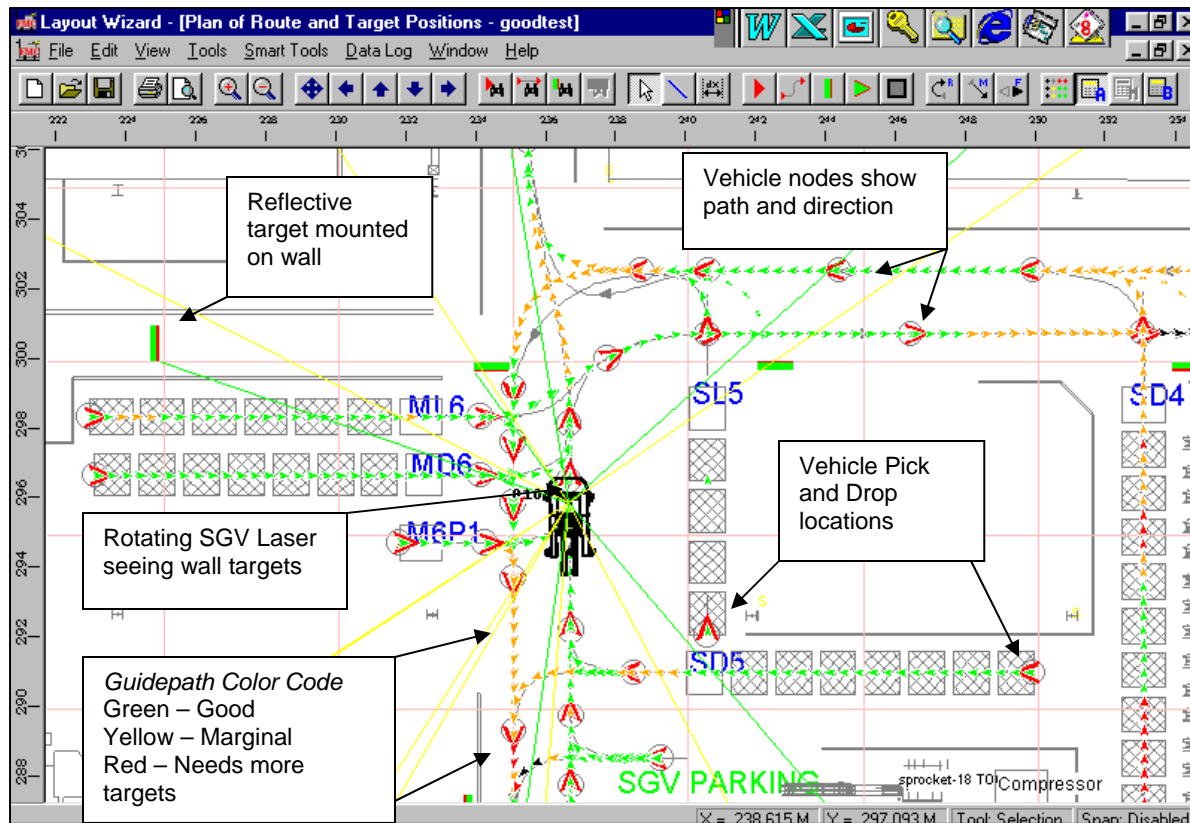
Features of Layout Wizard™ :

- Laser navigation target optimization tool
- Automatically generates SGV traffic rules
- Laser bumper field selection
- Automatic "Move" generation
- Seamless layout transfer to JBTC SGV Manager
- Proven Accuracy
- Plant layout imports (*.dxf)
- MS Windows based
- Multi-windowed workspace
- Intuitive graphical user interface
- RF file downloads to SGV fleet

Layout Wizard™

How it works:

- 1 Import plant dxf** Bring into Layout Wizard a digital view of the places where SGVs will work.
- 2 Create Nodes** Point and click points on the path where the SGV will travel, pick up, and deliver goods.
- 3 Create Moves** Connect the dots by clicking between nodes to create SGV guidepath.
- 4 Verify Targets** Color coding shows where more reflective targets should be added for accurate SGV laser navigation
- 5 Compile Application** Generate data that SGVs use to move throughout the facility.
- 6 Download to SGV** Allows wireless or wired file transfer of the new road system to the SGV(s).



www.jbtc-agv.com



John Bean Technologies Corp.
400 Highpoint Drive
Chalfont, PA 18914 USA
Phone: 215-822-4600
Fax: 215-822-4553
sgv.sales@jbtc.com

John Bean Technologies SA
106 Bd Heloise
Les Harmoniques
95101 Argenteuil Cedex, France
Phone: +331 399 646 59
Fax: +331 399 646 74
contact@jbtc-agv.fr

John Bean Technologies NV
Breedstraat, 3
B-9100 Sint Niklaas, Belgium
Phone: +32 3 780 1336
Fax: +32 3 777 7955
snt1_sgv@jbtc.com

John Bean Technologies Ltd.
Unit V1 Winchester Avenue
Blaby Industrial Park
Blaby Leicester, UK, LE8 4GZ
Phone: +44 116 264 2250
Fax: +44 116 264 2279
uksgvsales@jbtc.com